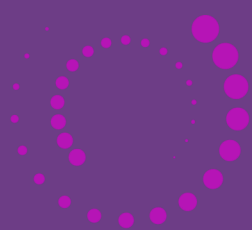


# “Work Works” Supported internship programme



Supported employment specialists, working with local employers to create a more diverse workforce and inclusive recruitment practices



# Status

Employment Health & Wellbeing for a better future



## What we provide

- ⇒ A Dedicated Employment Advisor
- ⇒ Time unlimited support
- ⇒ Information, advice and Guidance
- ⇒ Benefits guidance
- ⇒ Support with disclosing your health needs to employers
- ⇒ Employer Engagement
- ⇒ Journey to work planning
- ⇒ Guidance about reasonable adjustments
- ⇒ Job Coaching
- ⇒ In work support

Status Employment has over 30 years of experience in supporting people with disabilities into sustainable paid employment.

Founded in 1991, Status Employment was originally set up to help people with disabilities find paid employment and enable them to move away from the traditional day centre Settings. Status Employment continues to support people with health conditions and disabilities, assisting them to achieve their aspirations and find work.

Alongside this we deliver innovative and creative solutions to support the most disadvantaged people within our communities.

### **“work works” Supported internship programme**

Our work works service is FREE for 18—35Yrs Lambeth residents who have a learning difficulty/disability (with or without an EHCP)

The service works alongside The Dialogue Hub and in partnership with Lambeth Made. Clients will complete a 12 week internship at an employer of your choice and receive both in work support to sustain this opportunity alongside employability support to secure long term permanent employment.

We work with you as an individual and offer a service tailored to meet your needs, based on your preferences and your work choices.

we provide in your area

## Eligibility

A free service open to all Lambeth Residents

18-35 years old

People with a learning difficulty/ disability (with out without an EHCP)

Work motivated to complete a 12 week internship opportunity

Willing to engage in employability support

Work motivated to gain paid employment

Must be willing and able to engage in support



## About the Services

### What does Status Employment Service offer?

*One to one support to gain and retain:*

Paid employment, part, or full time, in real work settings

Self-Employment

Voluntary work, work experience & education as stepping-stones to paid employment

Increased employability, life skills and confidence

### We will achieve this by:

Exploring your interests, skills, strengths, and experiences to identify an employment goal

Enabling you to create a realistic "Journey to Work Plan"

Providing support through the whole process, from identifying to achieving your employment goal

Providing on-going support enabling you to stay in work

### Here are some of the services we can provide...

Careers Guidance

Guidance on job searching & writing effective applications

Support when starting a job and regular confidential reviews

Employer engagement



Promoting diversity and assisting employers to have inclusive recruitment practice



Please contact us to request a referral form and or to have an informal conversation about your support needs



Employment Health & Wellbeing for a better future



Supported Employment Specialists

## STATUS EMPLOYMENT

Status Employment Limited  
6 West Way Gardens, Shirley, Croydon,  
CRo 8RA. Telephone: 020 8655 3344

<http://www.statusemployment.org.uk>

Registered as a company in England (3395383)  
and charity (1064752)